

# DIGITAL FORCE GAUGE (DFI)

PROGRAMMABLE RESOLUTION  
PROGRAMMABLE DIGITAL FILTER  
PROGRAMMABLE BAUD RATE  
ZERO FUNCTION  
PEAK FUNCTION (positive and negative)  
RS232C SERIAL OUTPUT (on request)  
ANALOG INDICATOR for REFERENCE



BATTERY LIFE: 1 YEAR(200Hrs)

DIGITAL FILTER ALLOWS TO  
AVERAGE UNSTEADY or  
PULSATING FORCE.

Shown: Actual Size

Total Length 7.5"  
Sensor Thickness: 11/16"

Range for Nominal Load  
0 to 4,500lbs and 0 to 9,000lbs

Resolution 0.01  
Accuracy Class: less than +/- .5%  
Linearity: less than +/- .20%FS  
Hysteresis: less than +/- .20%FS  
Repeatability: less than +/- .05%FS  
Readings per sec. (0 filter): 10 (100ms)

Display: Custom LCD (H=5/8")

MECHANICAL LIMIT:  
Service Load: 120%FS  
Max Permissible Load: 150%FS  
Breaking Load >300%FS  
Displacement at Nominal Load: .007"

CODE: 90.3.W

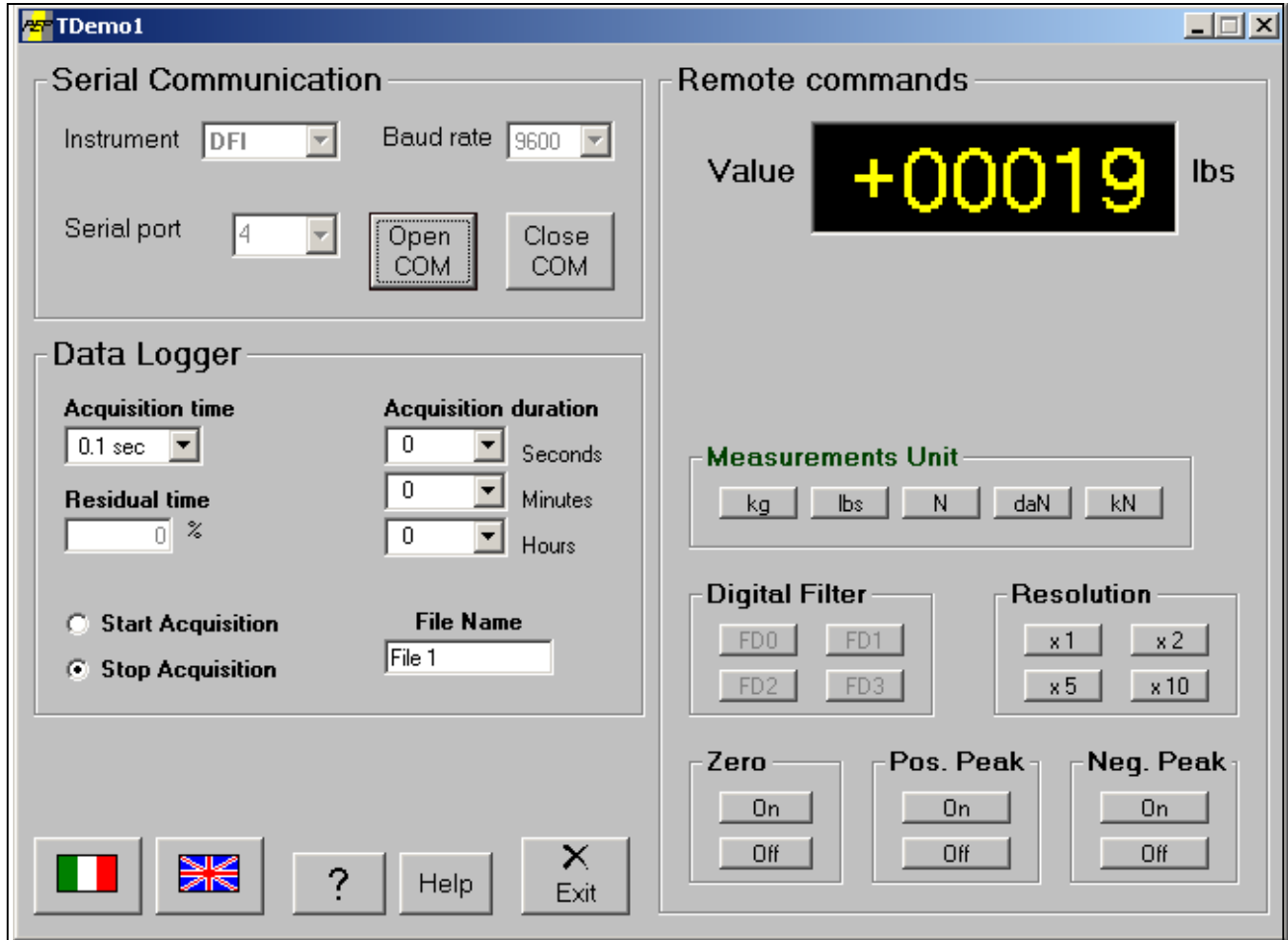
**INDUSTRIAL QUALITY  
TECHNICAL SUPPORT**

**PERFORMANCE  
DEPENDABILITY**

**WELDING TECHNOLOGIES [www.weldingnet.com](http://www.weldingnet.com)**

# DIGITAL TIP FORCE GAUGE

## RS232 Interface



Optional RS232 Interface is available for DFI-45, DFI-90 and DFI-90-FLEX.

Screen above allows record all the data measured. This feature is especially valuable when DFI is used with UNIVERSAL™ NUT and STUD Checker.

DFI-90-FLEX (has the same Technical Parameters as the DFI with a hard Stem)

See the picture on the left