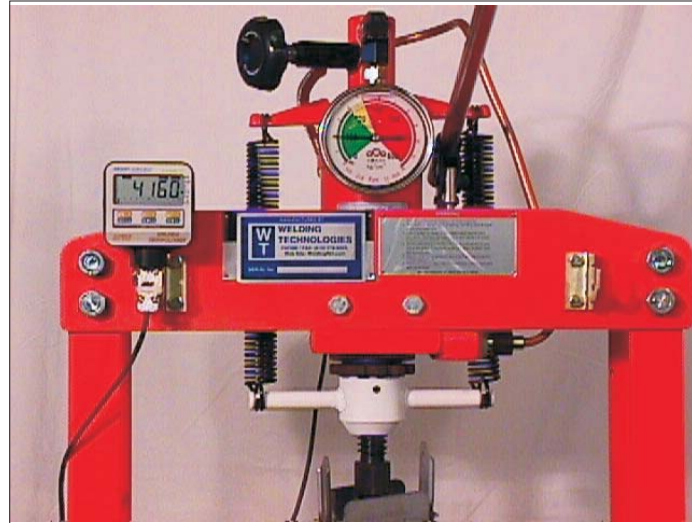
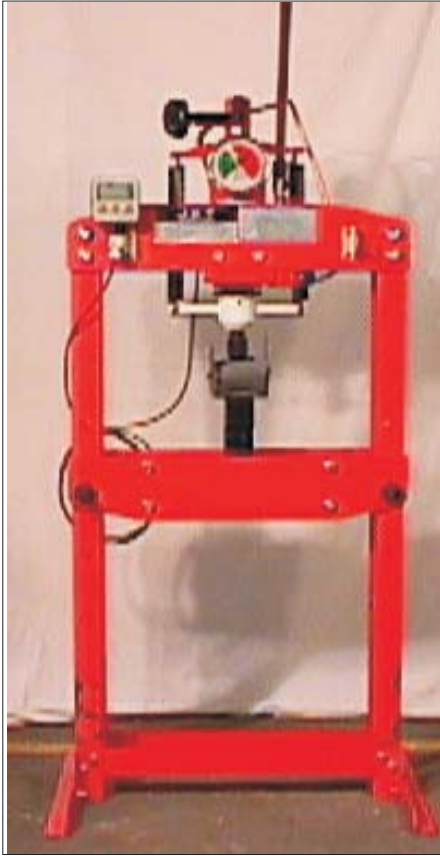


Digital Weld Nut Checker "Universal".



Work Load Area

Must have for any ISO Manufacturing Facility

Digital display allows to see force, applied to push the nut (or stud) out. "Peak" feature allows to register maximum force which occurred during testing.

Can also be used as the Tip Force Calibration Gage.

Specifications for the Tip Force Sensor, built in:

Accuracy Class: less than .50% FSO Operating Temperature Range: -54deg. C to 121 deg. C

Linearity: +/- .25% FSO (-65 deg.F to 160 deg F)

Hysteresis: +/- .20% FSO Compensated Temp. Range: +16 deg.C to 71 deg.C

Repeatability: +/- .05% FSO (+60 deg.F to 160 deg.F)

Capacity: 0-4,500 lbs or 0-9,000lbs

CERTIFICATION SHEET IS PROVIDED FOR EVERY TESTER

Calibration services are available for a combination of the Meter and a Load Cell.

Maximum safe load cell overload is 12,000lbs.

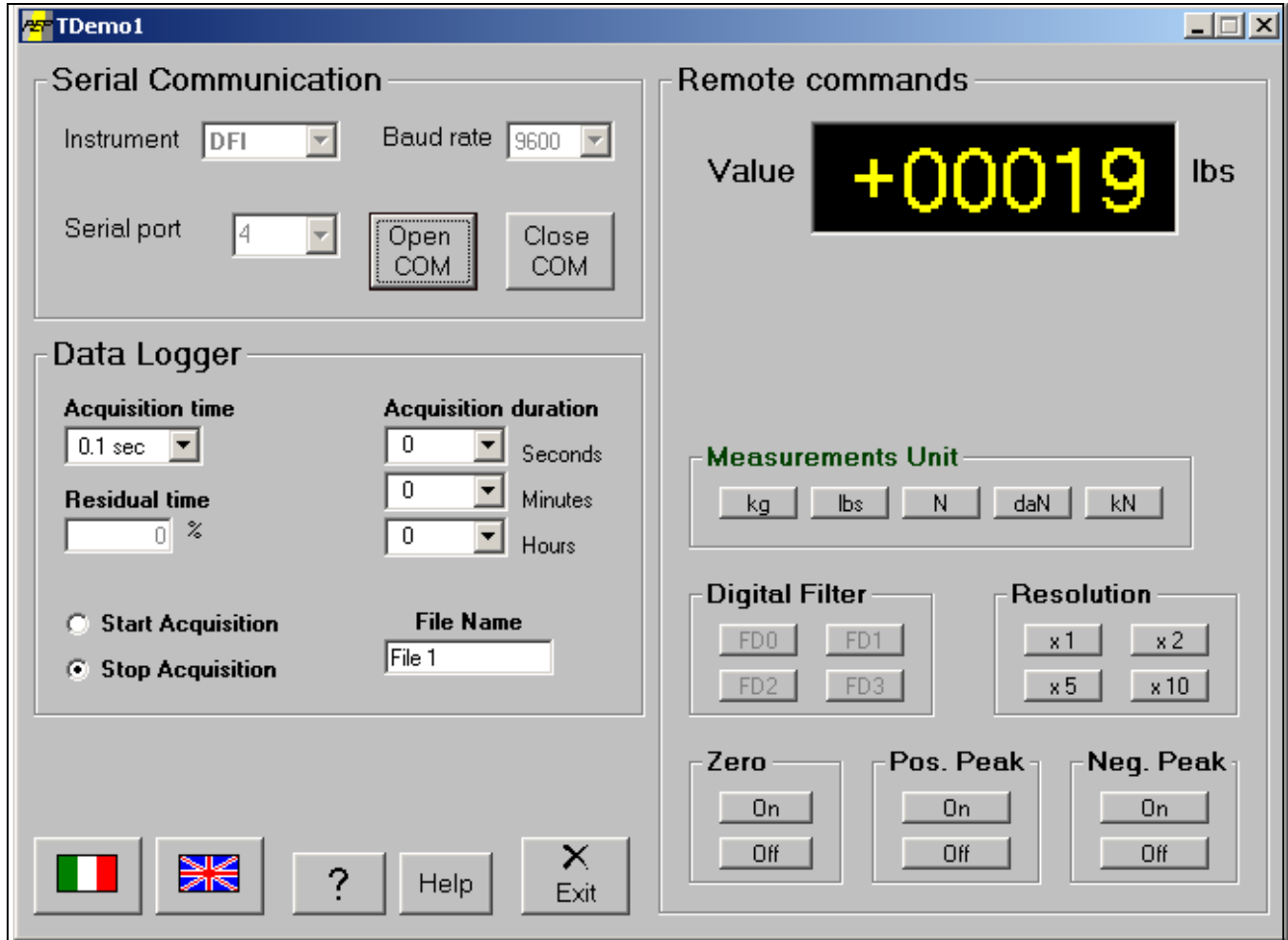
Manufactured by WELDING TECHNOLOGIES

1365 Horseshoe Dr, Blue Bell, PA 19422

Phone/FAX (610) 278-9325 Toll Free: 1-888-383-9353

DIGITAL TIP FORCE GAUGE

RS232 Interface



Optional RS232 Interface is available for DFI-45, DFI-90 and DFI-90-FLEX.

Screen above allows record all the data measured. This feature is especially valuable when DFI is used with UNIVERSAL™ NUT and STUD Checker.

DFI-90-FLEX (has the same Technical Parameters as the DFI with a hard Stem)

See the picture on the left